

Part – I: Guidelines to candidates Appearing for Pilot License Examination - ONLINE
(Computer Based)

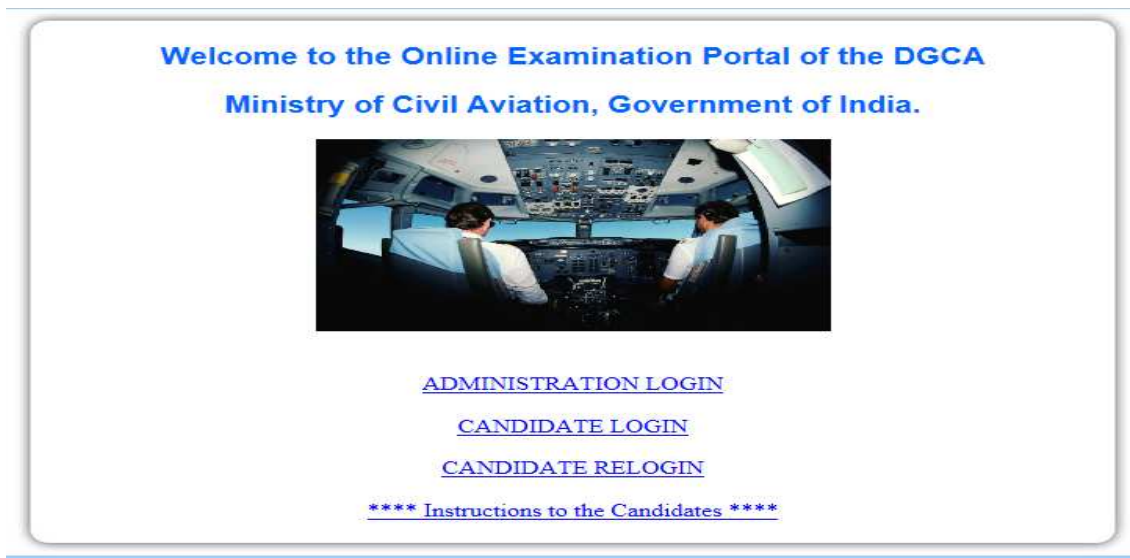
Section – A

GUIDELINES FOR THE ONLINE TEST

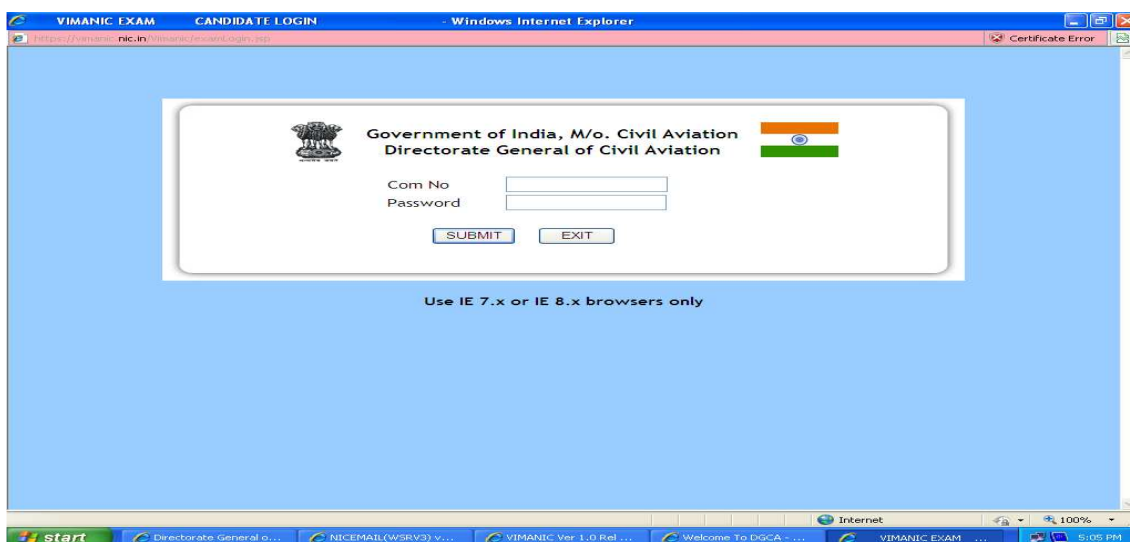
This document details the Instructions and Procedures to be performed by the Candidate while appearing for Online Examination.

Candidates are to be seated in their respective seat as per the time specified in the Instructions to the candidate published along with the list of admitted candidates for the respective session.

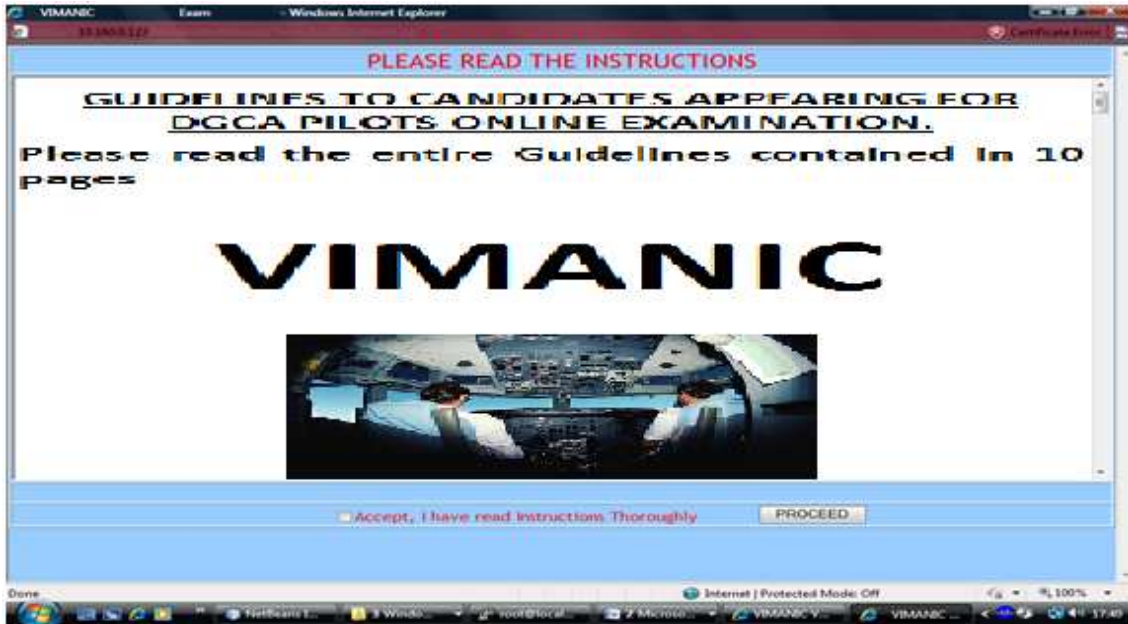
1. Enter the URL <http://vimanic.nic.in> on the IE Browser or double click on the shortcut provided on the desktop and press Enter Key. A screen as shown below is displayed.



2. Click on the "CANDIDATE LOGIN" link provided in the above screen. A screen as shown below is displayed.

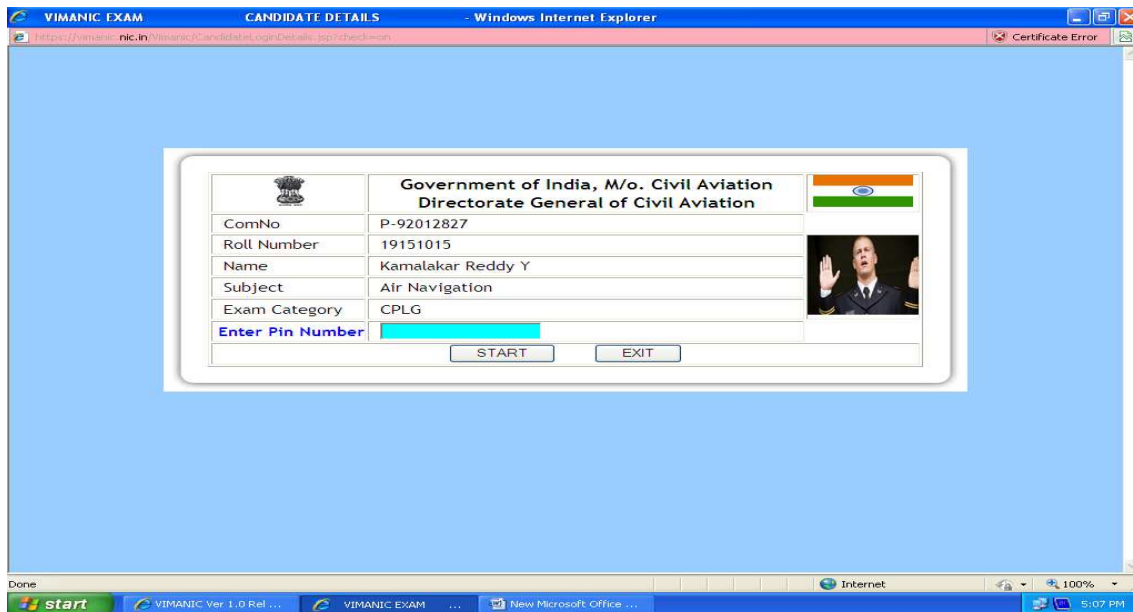


3. Enter the particulars like Computer Number and the Password (Password as provided by the Controller of Examination / invigilator). On providing the necessary particulars, a screen as shown below will display the Instructions / Guidelines to the candidates.



Please **Scroll through all the pages and read the instructions thoroughly** and then click on the “Accept, I have read Instructions Thoroughly” check box and press the “PROCEED” button.

4. Click on “PROCEED” button navigates to the screen as shown below:

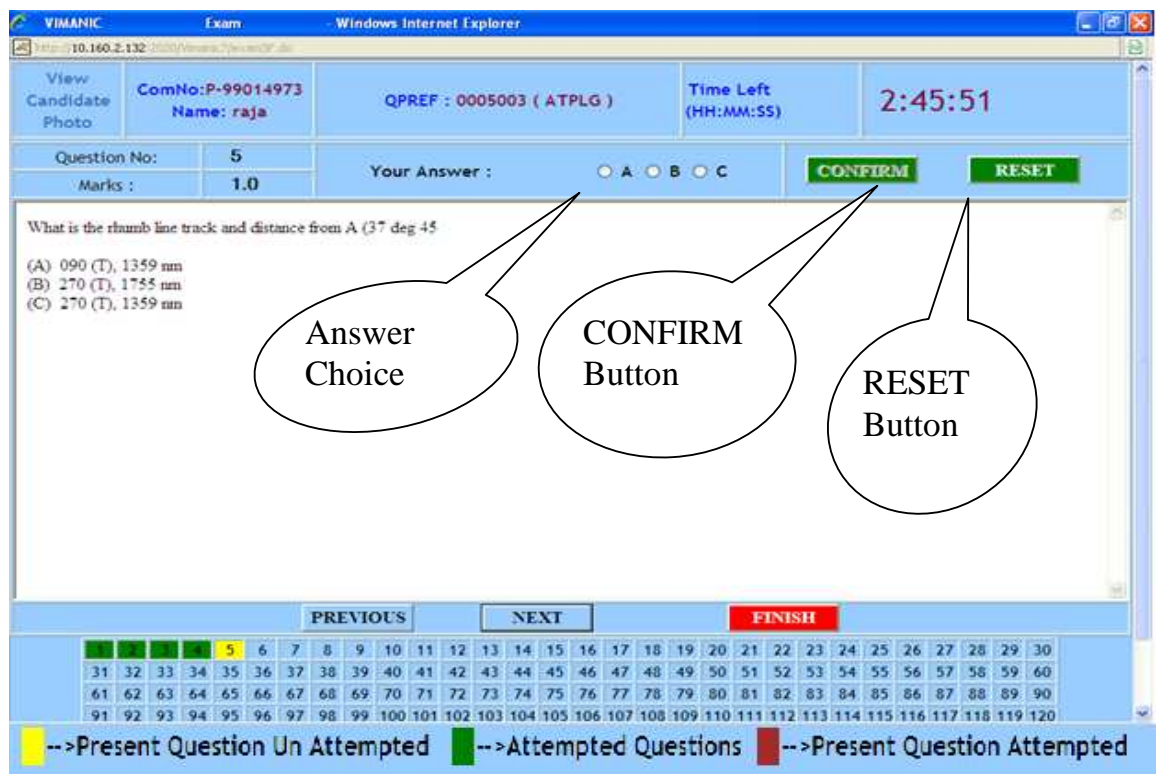


5. **Please confirm the details shown, such as your computer number, Roll Number, name, Subject, Exam Category, and enter the PIN Number as provided by the Controller of Examination / Invigilator before start of the examination in the above displayed screen.** Start of Examination is possible only at the scheduled time of Examination. In case of morning batch the examination will start by 1000 Hrs. and for the afternoon batch it will start only at 1500 Hrs.

6. After entering the Test Screen, you will be presented with the first question. The questions will appear one at a time. Each question has three choices for an answer. You have to select any ONE Option ONLY (A or B or C option). After selecting the Radio Button against A or B or C, please press “CONFIRM” button to indicate the confirmation of your choice.

After pressing “CONFIRM” on the screen, the next question will appear. The “RESET” button is to reset the answer already selected. Once “RESET” button is pressed, selection of choice has to be confirmed again by pressing “CONFIRM” button.

Please note that if a choice of answer is made by choosing A or B or C, but “CONFIRM” button is not pressed, then the system considers this status as unchanged from its previous state, whatever it may be.



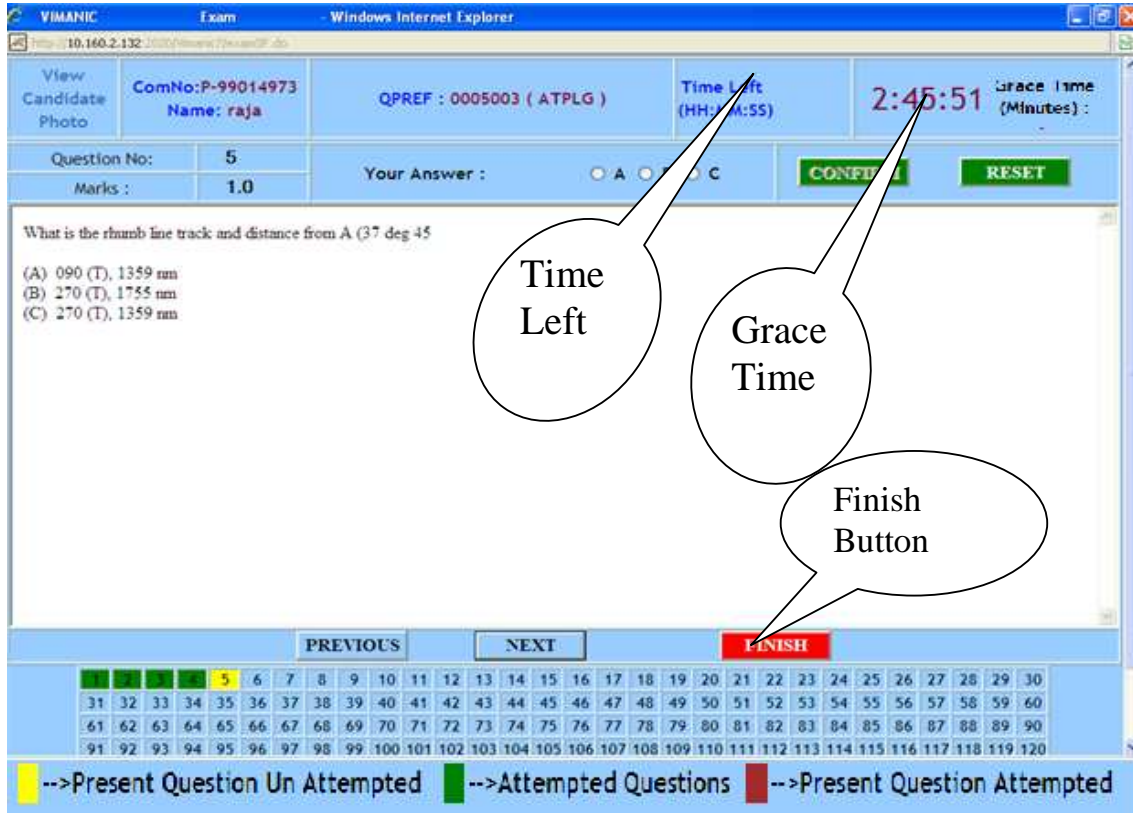
7. You can navigate between Questions by using the Next and Previous buttons. Also one can jump to any desired question for answering during the exam time using the Navigational Panel. Answers can be modified any number of times by the candidate during the time available to complete the exam.

The screenshot displays the VIMANIC Exam interface within a Windows Internet Explorer browser window. The interface includes a header with candidate information (ComNo: P-99014973, Name: raja, QPREF: 0005003 (ATPLG), Time Left: 2:45:51) and a question area (Question No: 5, Marks: 1.0). The question asks for the rhumb line track and distance from A (37 deg 45'). The answer options are (A) 090 (T), 1359 nm; (B) 270 (T), 1755 nm; and (C) 270 (T), 1359 nm. Below the question area, there are 'PREVIOUS', 'NEXT', and 'FINISH' buttons. A 'Navigation Panel' at the bottom shows a grid of question numbers (1-120) with a legend: yellow for 'Present Question Un Attempted', green for 'Attempted Questions', and red for 'Present Question Attempted'. Callouts point to the 'Previous', 'Next', and 'Navigation Panel' buttons.

8. All the questions answered/confirmed are indicated in 'Green' colour in the navigation panel shown at the bottom of the screen. If you don't see the navigation panel fully on the bottom of the screen, please scroll down. It is suggested that you may jump to a question for answering by selecting it from the navigational panel. The current un-attempted question being selected for answering is shown in "Yellow" color and present attempted question but to be confirmed being selected is shown in "Brown" colour.

The screenshot shows an online exam interface in a Windows Internet Explorer browser window. The title bar reads 'VIMANIC Exam - Windows Internet Explorer'. The address bar shows 'http://10.160.2.132:2001/Vimanic/Exam/0005003'. The interface includes a header with 'View Candidate Photo', 'ComNo: P-99014973', 'Name: raja', 'QPREF: 0005003 (ATPLG)', and 'Time Left (HH:MM:SS) 2:45:51'. Below this, it displays 'Question No: 5' and 'Marks: 1.0'. The 'Your Answer' section has radio buttons for 'A', 'B', and 'C', along with 'CONFIRM' and 'RESET' buttons. The question text is: 'What is the rhumb line track and distance from A (37 deg 45)'. The options are: (A) 090 (T), 1359 nm; (B) 270 (T), 1755 nm; (C) 270 (T), 1359 nm. At the bottom, there is a navigation panel with 'PREVIOUS', 'NEXT', and 'FINISH' buttons. A grid of question numbers from 31 to 120 is shown. A legend below the grid indicates: yellow square for 'Present Question Un Attempted', green square for 'Attempted Questions', and red square for 'Present Question Attempted'. Three callouts are present: one pointing to question 5 (yellow) with text 'un-attempted question and being selected for answering'; one pointing to question 37 (red) with text 'Attempted but to be confirmed Question'; and one pointing to question 31 (green) with text 'Answered/ Confirmed Question'.

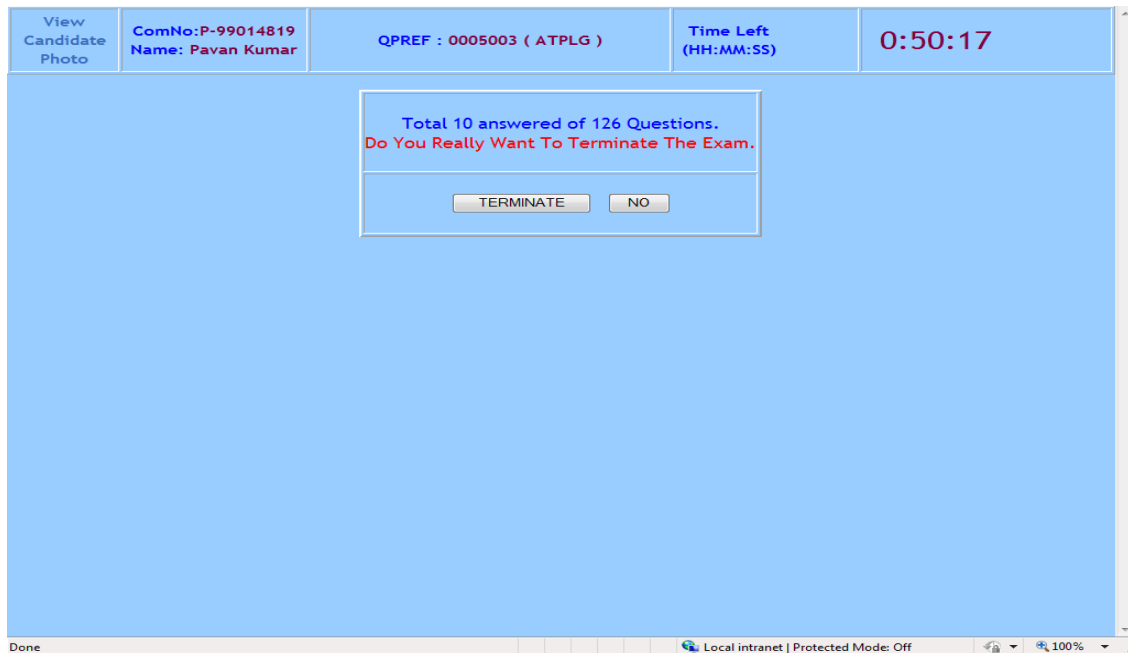
9. The time available for the candidate at any point of time will be shown on the screen as “**Time Left**” in HH:MM:SS indicating the remaining time in Hours, Minutes and Seconds. This timer clicks down the total Exam Time to Zero Seconds. The Panel also indicates the Grace time granted due to system / network related problem and where “Candidates Re-Login” option availed.



You will be automatically stopped from answering questions when the Time allotted is over.

10. The “FINISH” button may be used **only after the candidate successfully answered as many as he/she can do and wants to end the exam**

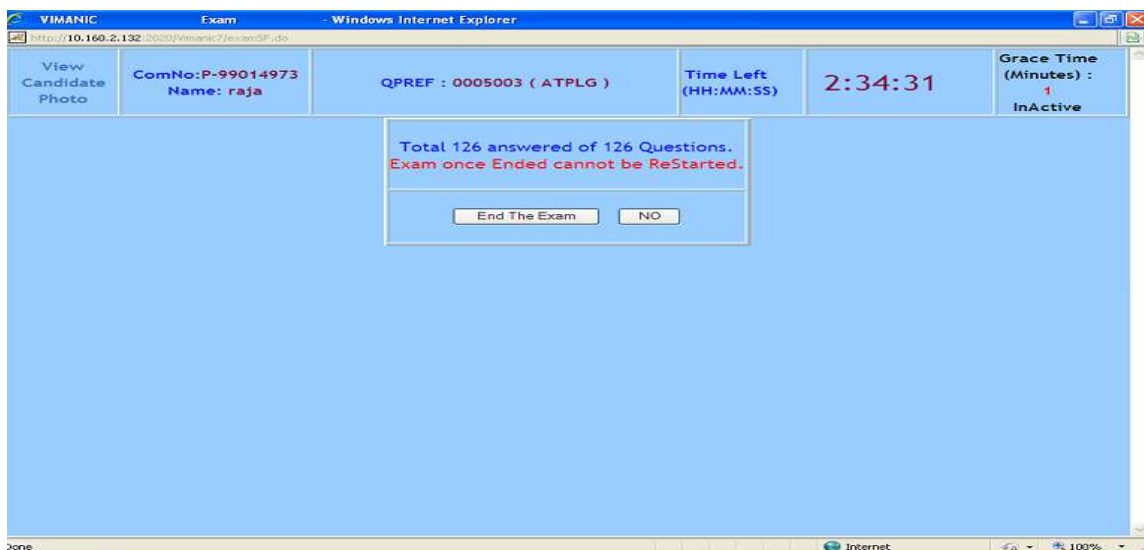
If by accident you click the “FINISH” button, the system will prompt you with a message as displayed below.



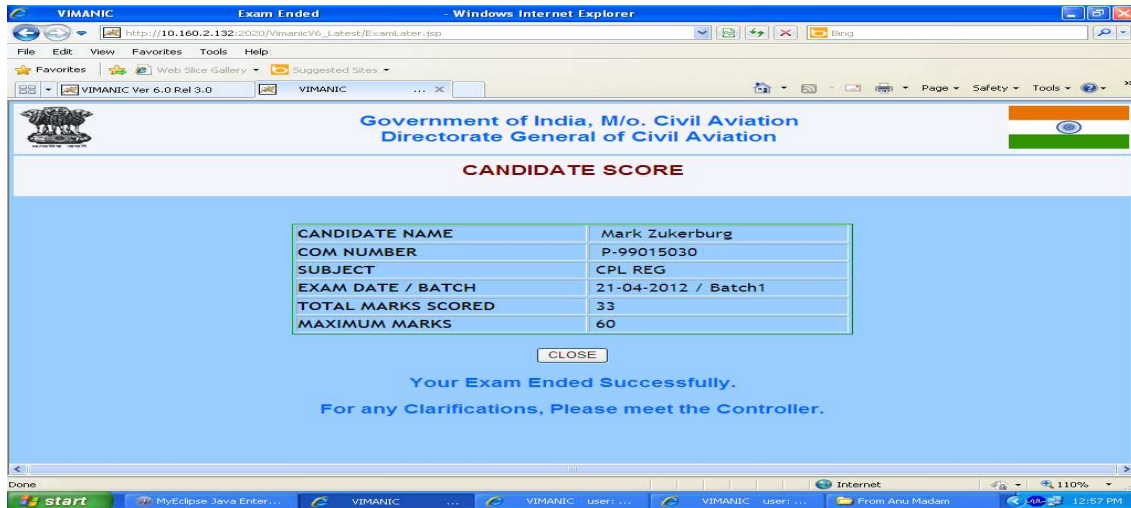
If the “FINISH” Button had been clicked by accident, then select the button “NO” on the screen displayed.

If you confirm the Finish action by clicking “TERMINATE”, the candidate is prompted for his / her re-confirmation. Finishing the Exam would mean complete and final exit from the Exam and you will not be able to come back to exam screen for the same batch on the same session.

11. When the candidate selects “End the Exam” the Exam answers are submitted and the Exam is deemed to be finished with.



12. As soon as the candidate confirms that the exam is completed or on the completion of the Exam, On pressing the “END OF EXAM” button the candidate’s performance is evaluated and the score will be displayed as mentioned below:



13. After having seen the marks, the candidate may press the “CLOSE” to close the browser.
14. If you face any problem with your terminal, while giving examination, don't panic. Just inform the invigilator and you will be given another terminal. The time lost on account of this will be taken care by the system automatically and displayed under “GRACE TIME”
15. **There is No provision for revaluation of answer papers at any stage by CEO. Candidates shall refrain from making request for revaluation from DGCA**

Part – B.

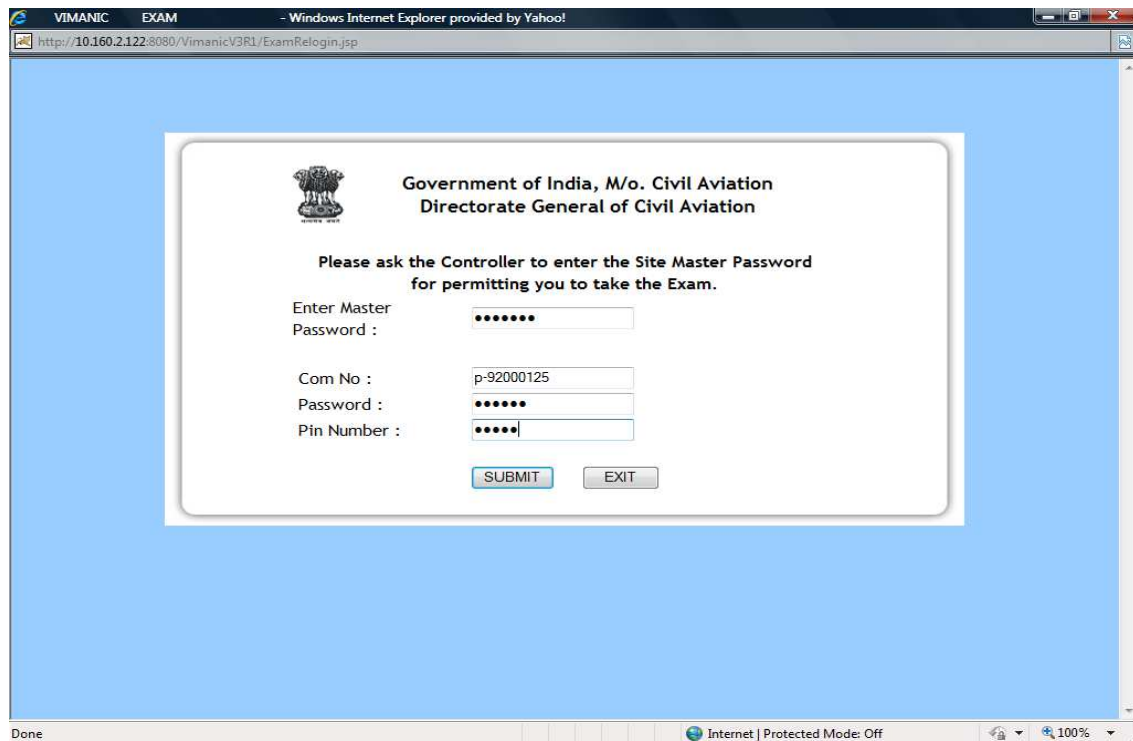
GUIDELINES FOR RELOGIN TO THE ONLINE TEST

Due to any technical problem like power failure, Network failure, Computer malfunction etc. after the START of the exam, if candidate is unable to continue the exam, then the candidate has to inform the invigilator / Controller of Examination (COE).

The COE will check the status of the candidate on the COE's Dash Board. If the status is shown as “EXAM STARTED”, then the COE will close the browser of that candidate.

After thorough investigation, if found genuine, COE will select “CANDIDATE RELOGIN”. In the next screen the COE will enter the MASTER PASSWORD and permit the candidate to RELOGIN.

The screen for candidate RELOGIN is as shown below:



After the Site Controller enters the Master Password, Candidate has to enter his credentials. On entering the valid credentials, the exam screen is displayed

The time lost between the last accessed time of the exam screen and the time when "SUBMIT" button was pressed under the RELOGIN page is taken care and added as the re-login grace time.

Only those candidates who could successfully LOGIN at the first attempt and started the examination can avail this RELOGIN option.

Due to any reason, if a candidate was not successful to LOGIN to online exam even after the FIRST TIME with in the allowed grace period (30 Min), then that candidate CANNOT exercise the RELOGIN option.

Candidate who terminates the exam by choosing the "FINISH" button and RE-CONFIRMING TWICE to end the exam, they CANNOT utilize CANDIDATE RELOGIN option.

Candidate RELOGIN option CANNOT be utilized if the exam has been terminated / stopped by the COE.